

Proposals for Off-Leash Dog Recreation Areas

Within the Southwest Corridor Park

DCR Public Meeting

Thursday, August 2, 2018 – 7:00 p.m. – 8:30 p.m.
45 Danforth Street - 1st Floor
Jamaica Plain, 02130



Commonwealth of Massachusetts

Governor

Charles D. Baker

Lieutenant Governor

Karyn E. Polito

Energy and Environmental Secretary

Matthew A. Beaton

Department of Conservation and Recreation Commissioner

Leo Roy



DCR Mission Statement

To protect, promote and enhance our
common wealth of natural, cultural
and recreational resources
for the well-being of all

Welcome!

Purpose of the Meeting

- DCR will present, and obtain feedback on, location possibilities for an off-leash dog recreation area within the Southwest Corridor Park.

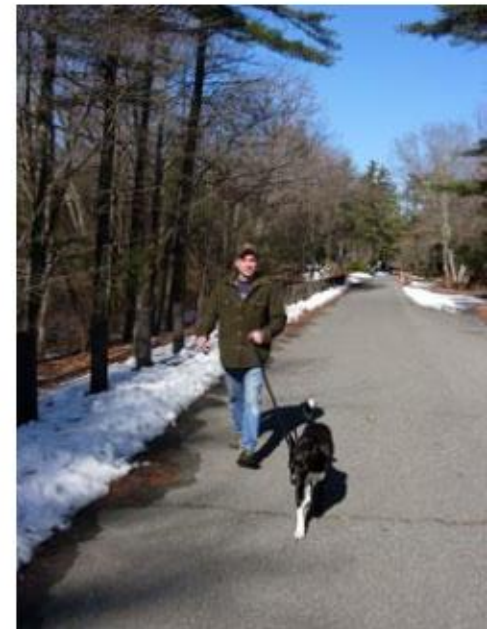
Ongoing DCR Off-Leash Dog Area Initiative

- There is growing need for off-leash dog recreation areas.
- The establishment of these areas requires consideration of natural and cultural resources, other park uses and surrounding neighborhoods.
- DCR is holding a series of public meetings to engage stakeholders, abutters, and park users in dialogue regarding additional off-leash recreation areas.

Overview/Background

We invite Dog Owners to be Park Users and Park Partners.

Dogs and their owners are welcome in DCR's parks, and we encourage all dog owners and their dogs to be respectful of other park users and neighbors. Join us in the stewardship of our parks by being a responsible dog owner and park partner.



Overview/Background

DCR welcomes dogs on-leash at most DCR parks, forests, and reservations. However, there is a number of locations where dogs are not allowed, mostly for public safety, public health, or habitat concerns or deed restriction purposes.



Overview/Background

DCR's new regulations ([302 CMR 12.13 and 302 CMR 12.17\(5\)](#)) were effective October 24, 2014 and include the designation of appropriate "off-leash" areas and call for a permit process for commercial dog walkers.

More information at:

<http://www.mass.gov/eea/agencies/dcr/massparks/recreational-activities/dogs-in-massparks.html> and general info on program.
URL

Benefits of Off-Leash Dog Recreational Areas

- Create public spaces for dog owners to recreate with their dogs off-leash
- Dogs learn to socialize/play with other dogs
- Foster community and new friendships
- Create safer parks/neighborhoods, more recreation areas
- Increase dog owner investment in parks

BETA Group, Inc.

The Design Consultant for the Project

Expertise in Landscape Architecture

Relevant Experience in:

- ü Public Projects

- ü Trail Design

- ü Park Design

- ü Dog Park Design

- ü Projects in Resource Areas

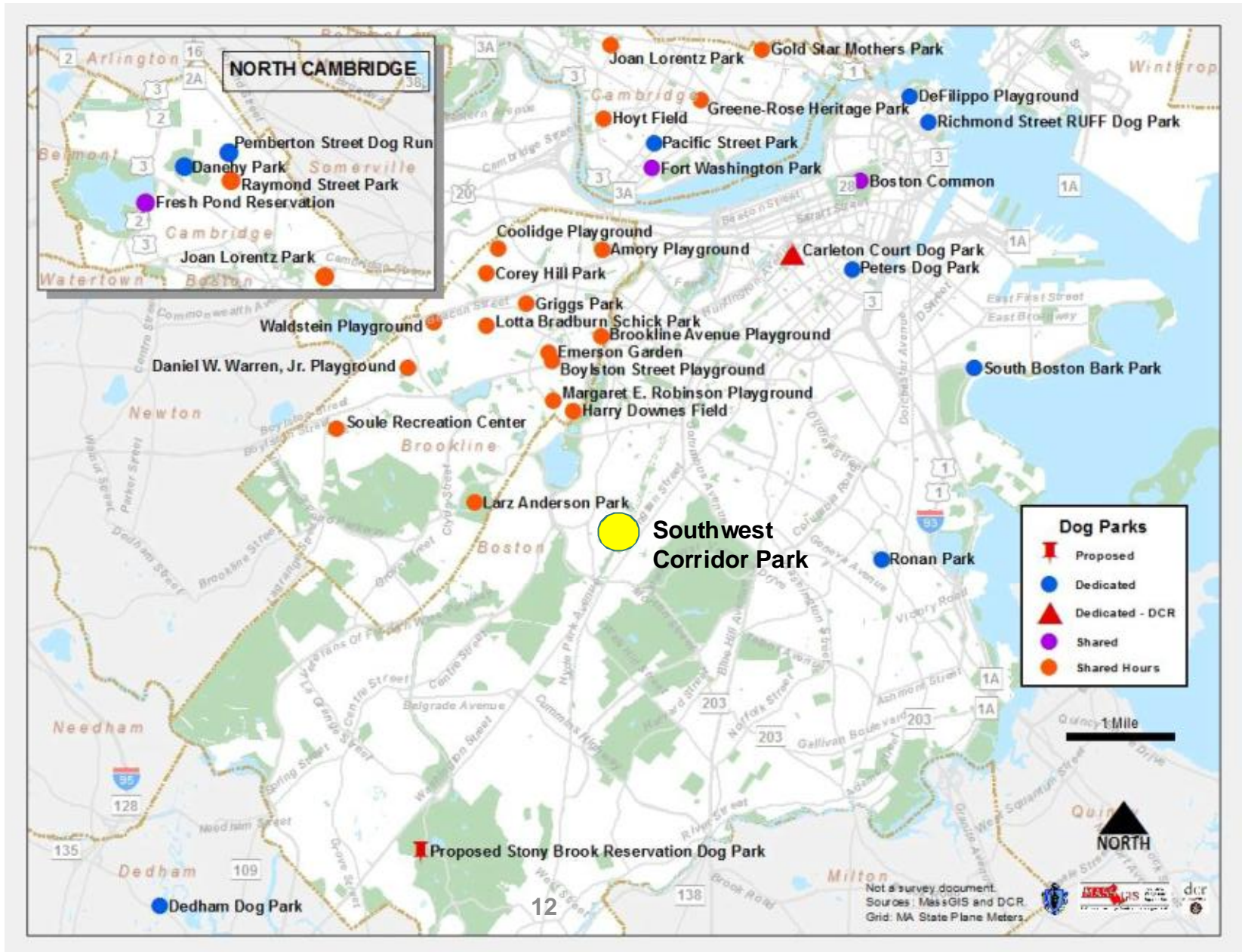
- ü Interpretive and Wayfinding Design

Today's Presentation

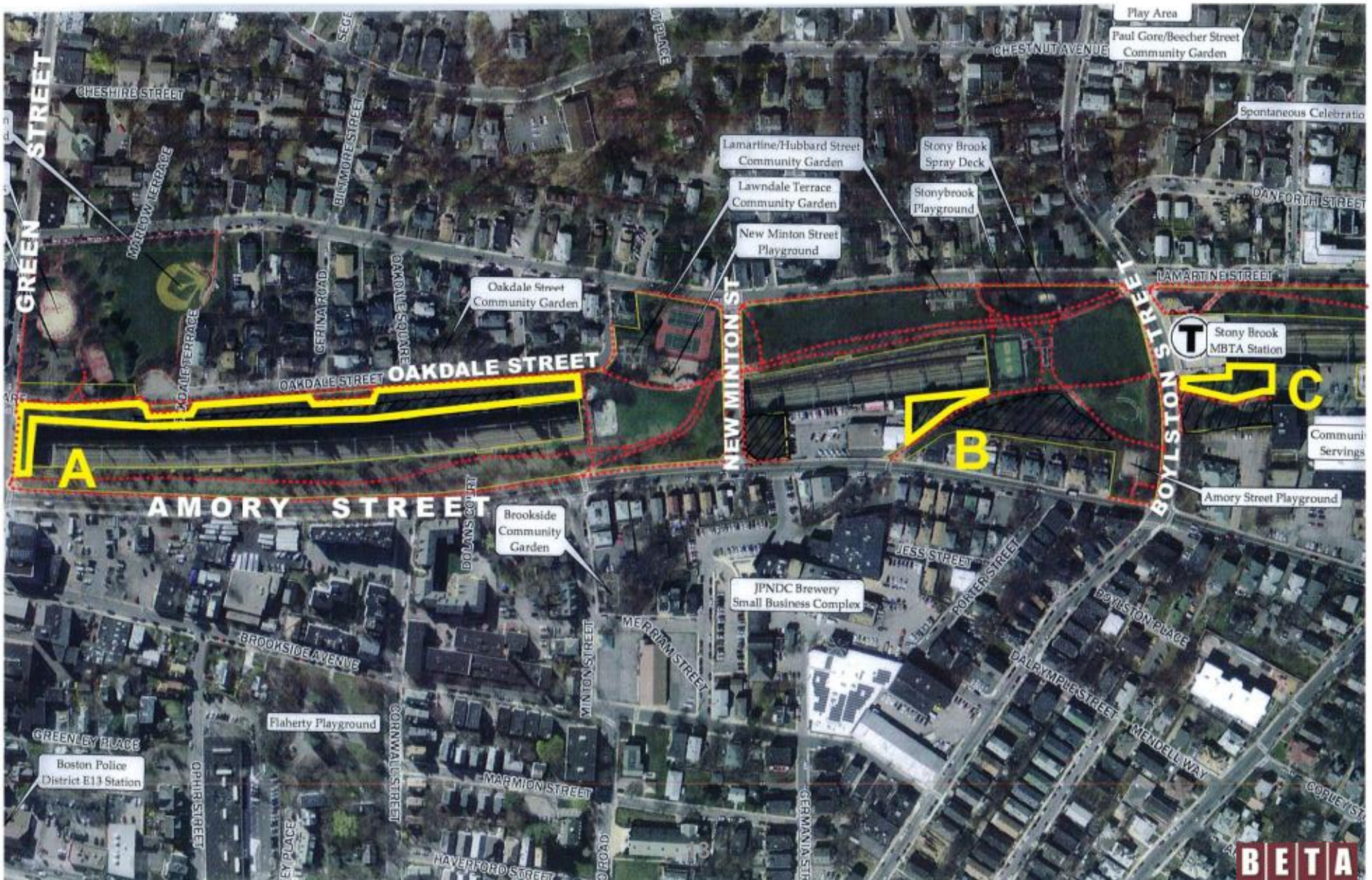
1. Maps
 - Existing Dog Park Facilities
 - Southwest Corridor Areas
2. Site/Location Analysis (3 Areas)
 - Existing Site Features
 - Surrounding Site Features
 - Safety
 - Utilities
 - Use Diagrams
3. Implementation Considerations
 - Urban Dog Park Images
 - Regulatory and Operations



Regional Dog Parks



Potential locations for a dog park along the Southwest Corridor Park



Site selection criteria for dog park locations:

1. Existing Site Features

- Square footage
- Grades/slope
- Circulation/access
- Shade trees/plantings
- Walls, fences, other

2. Surrounding Site Features

- Roadways
- Other park areas
- MBTA, on street parking
- Buildings: residences, commercial (coffee shop) institutional, other

3. Safety

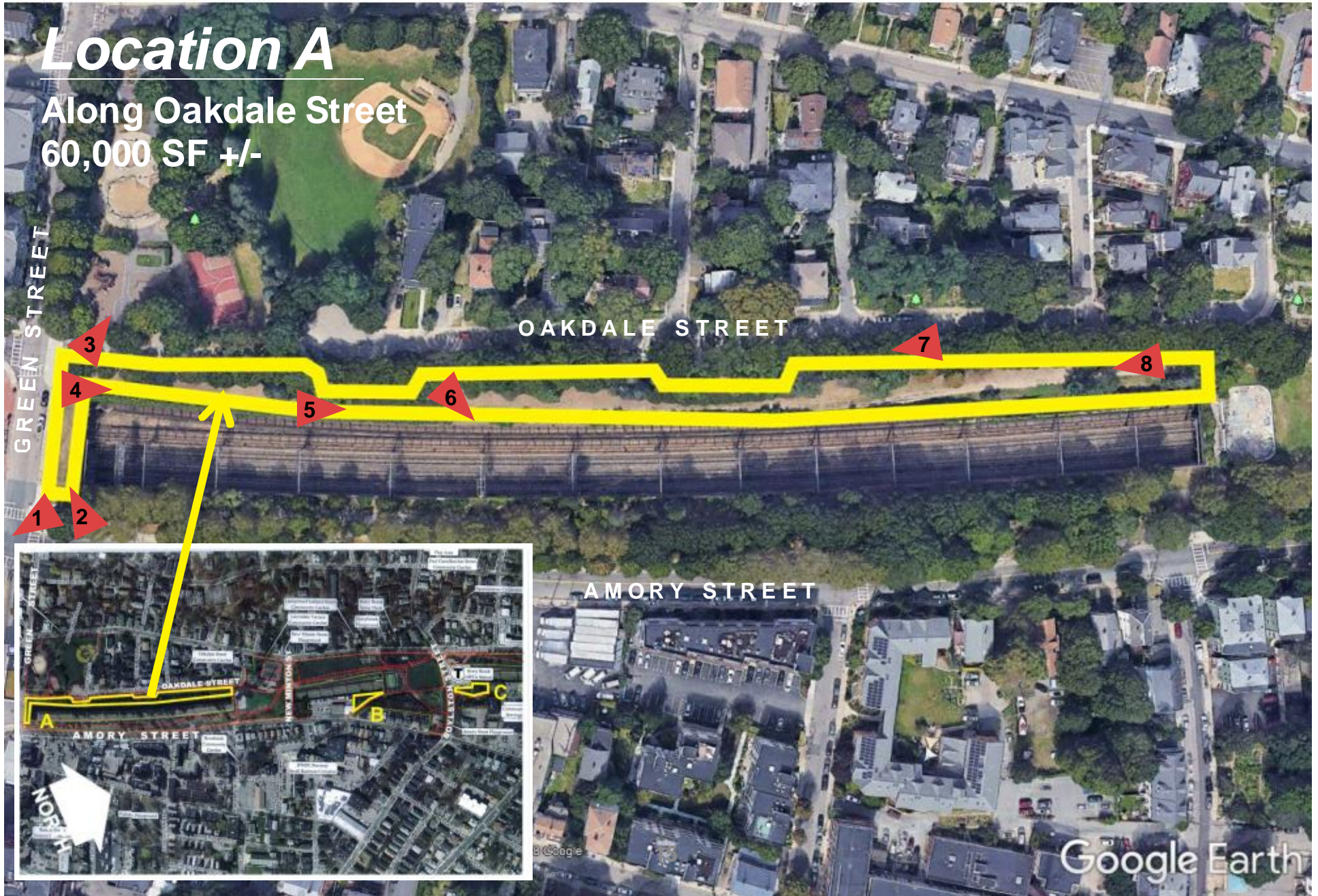
- Visibility
- Primary Roadway

4. Utilities and Maintenance

- Lighting
- Drainage structures
- Possible water sources

Location A

Along Oakdale Street
60,000 SF +/-



Location A Views



Location A Views



5



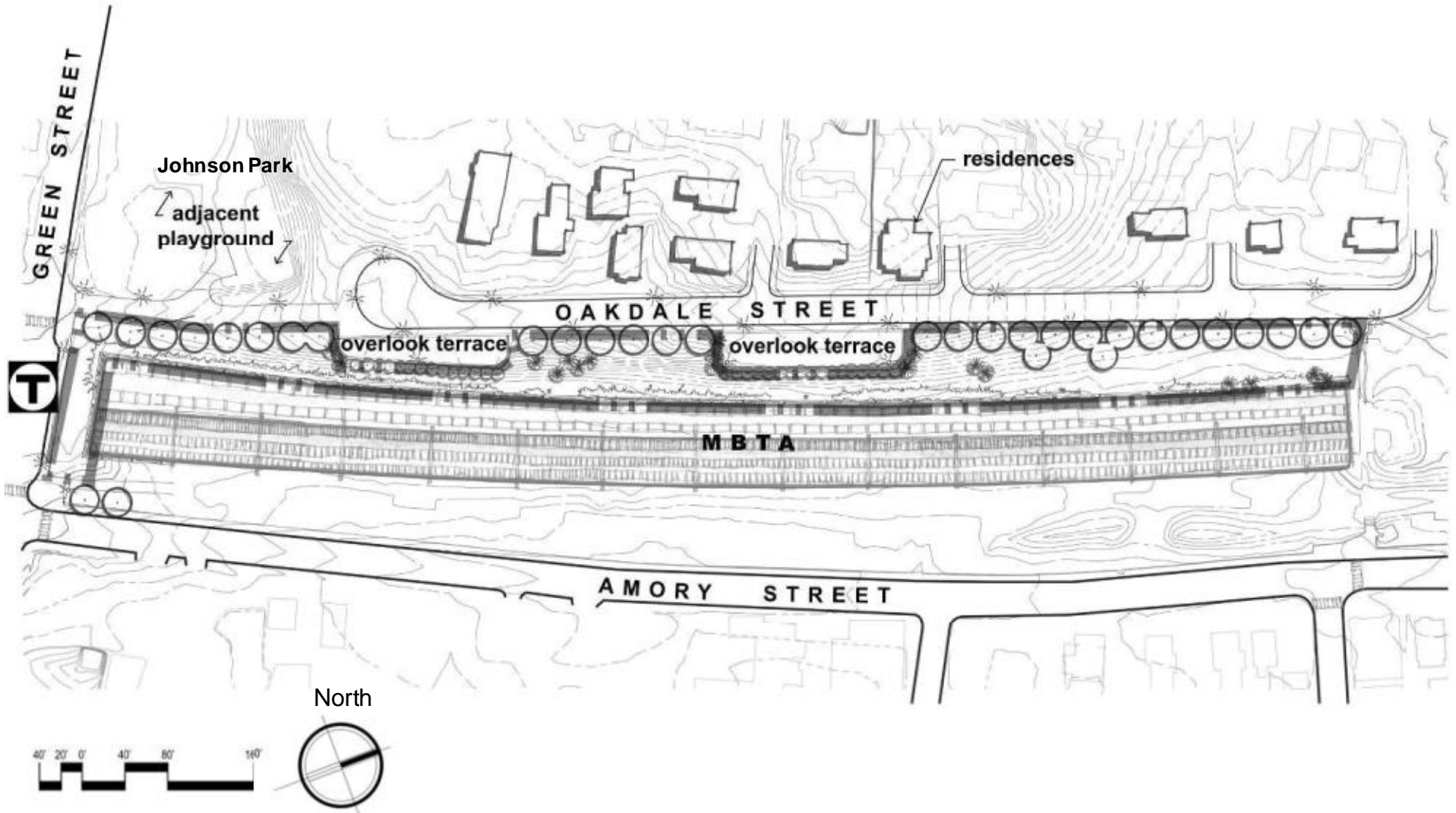
6



7



8

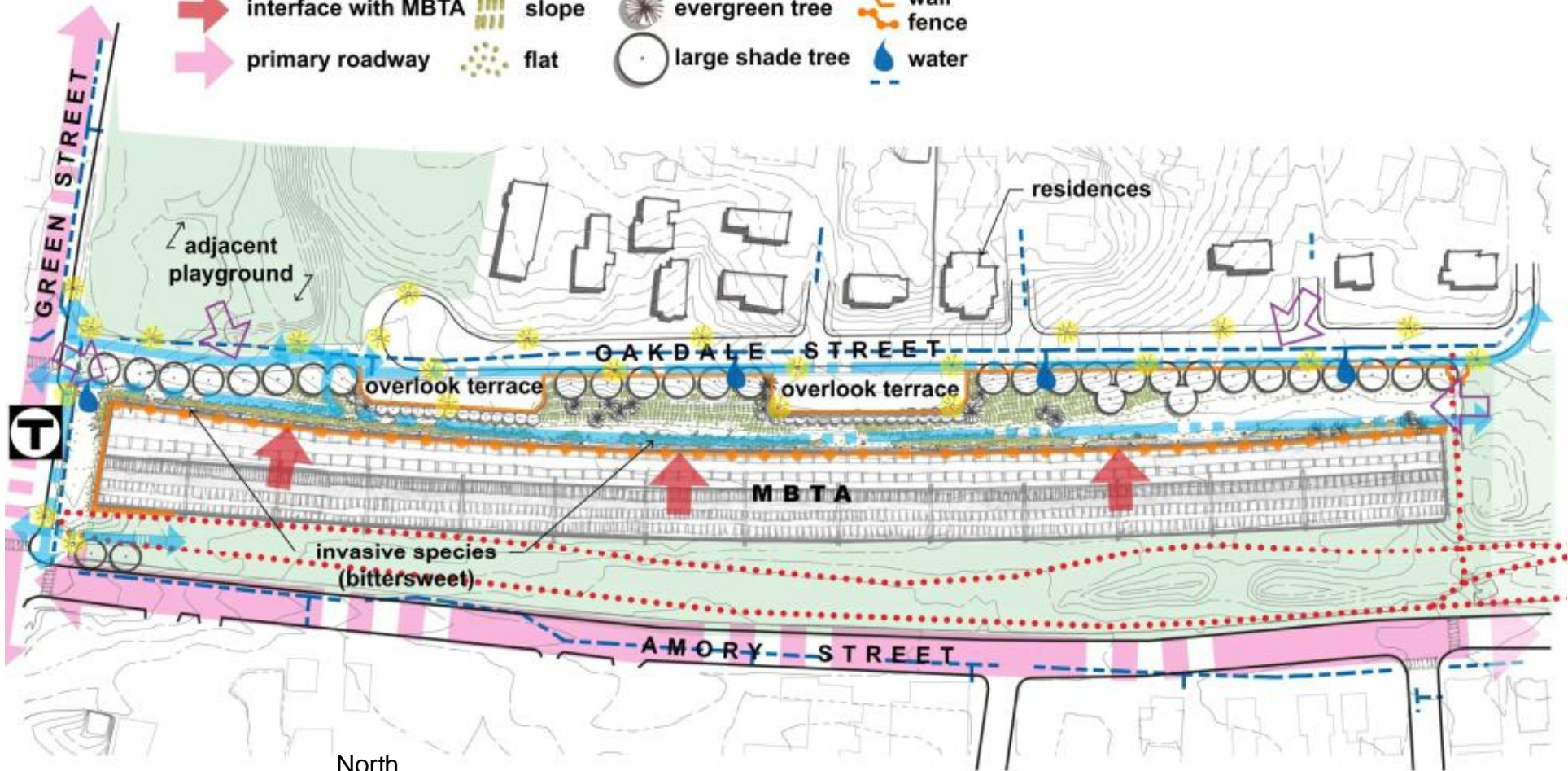


Site Inventory & Analysis: Existing Conditions

Location A

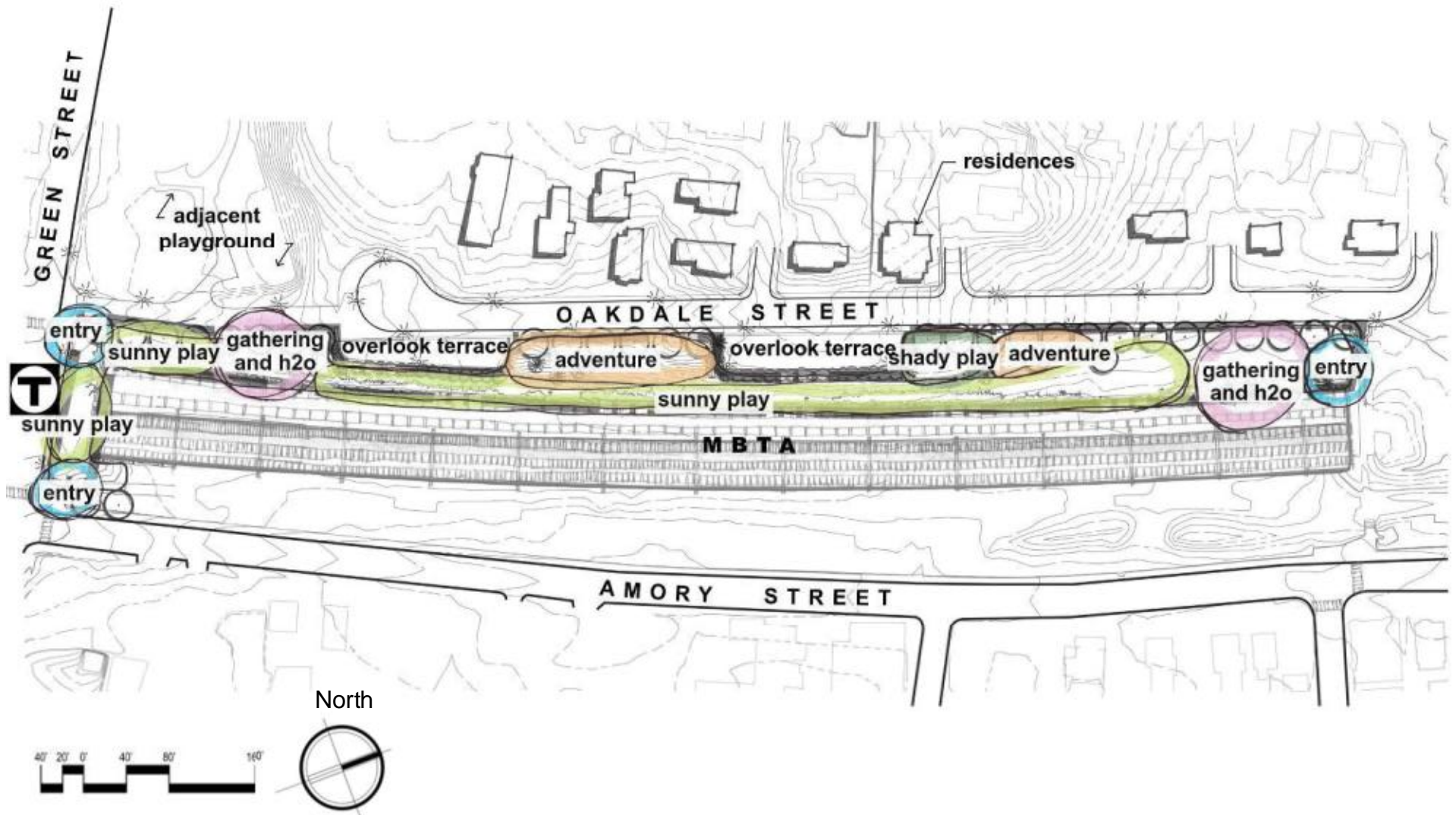
LEGEND

- circulation/access
- interface with MBTA
- primary roadway
- ↗ visibility
- ▭ other park areas
- lighting
- ⋯ SWCP walkways
- ▨ slope
- ⊙ evergreen tree
- wall fence
- flat
- large shade tree
- 💧 water



TOTAL AREA FOR DOG PARK: 59,706 SF

Site Inventory & Analysis: Evaluation
Location A

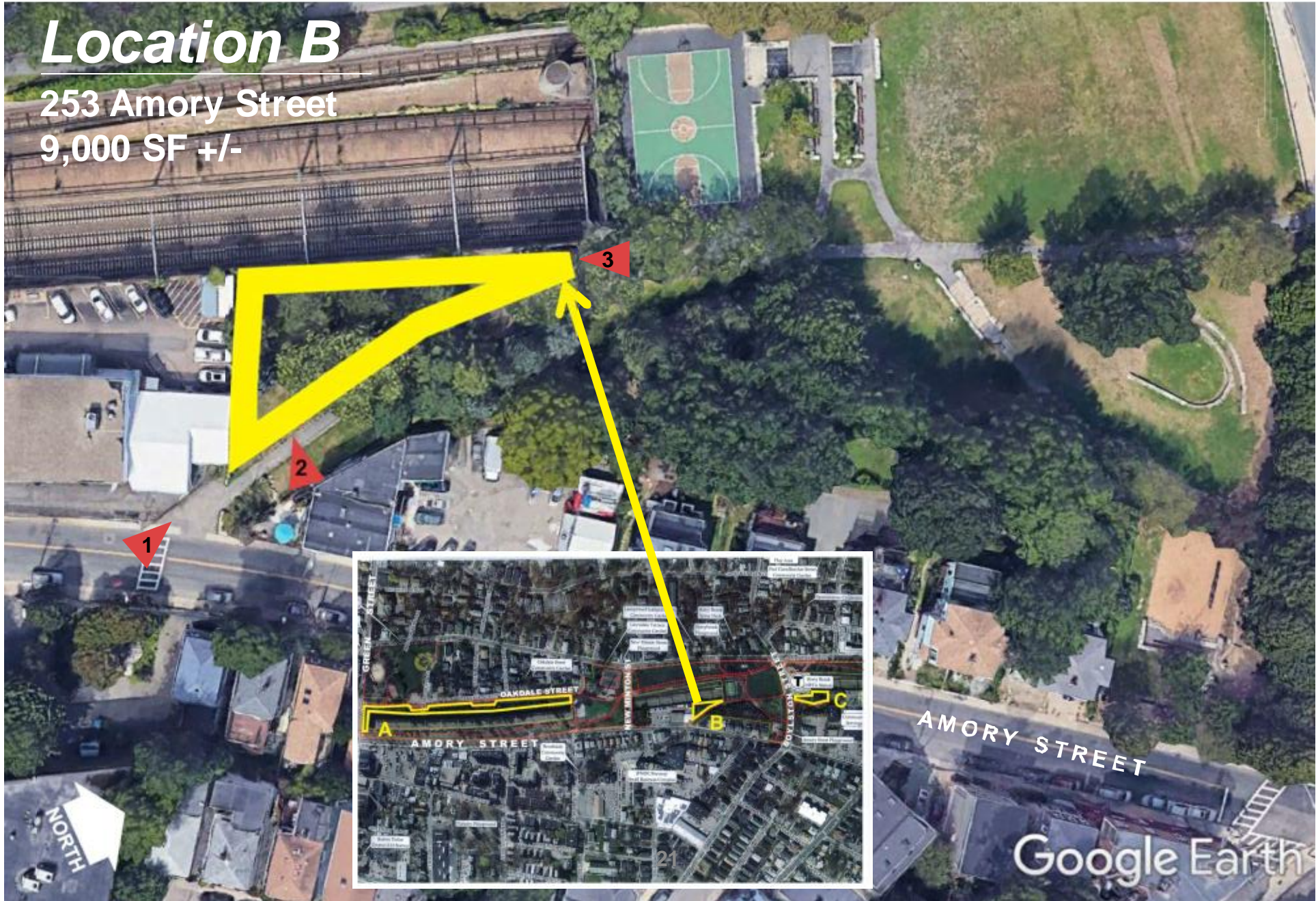


Site Inventory & Analysis: Use areas

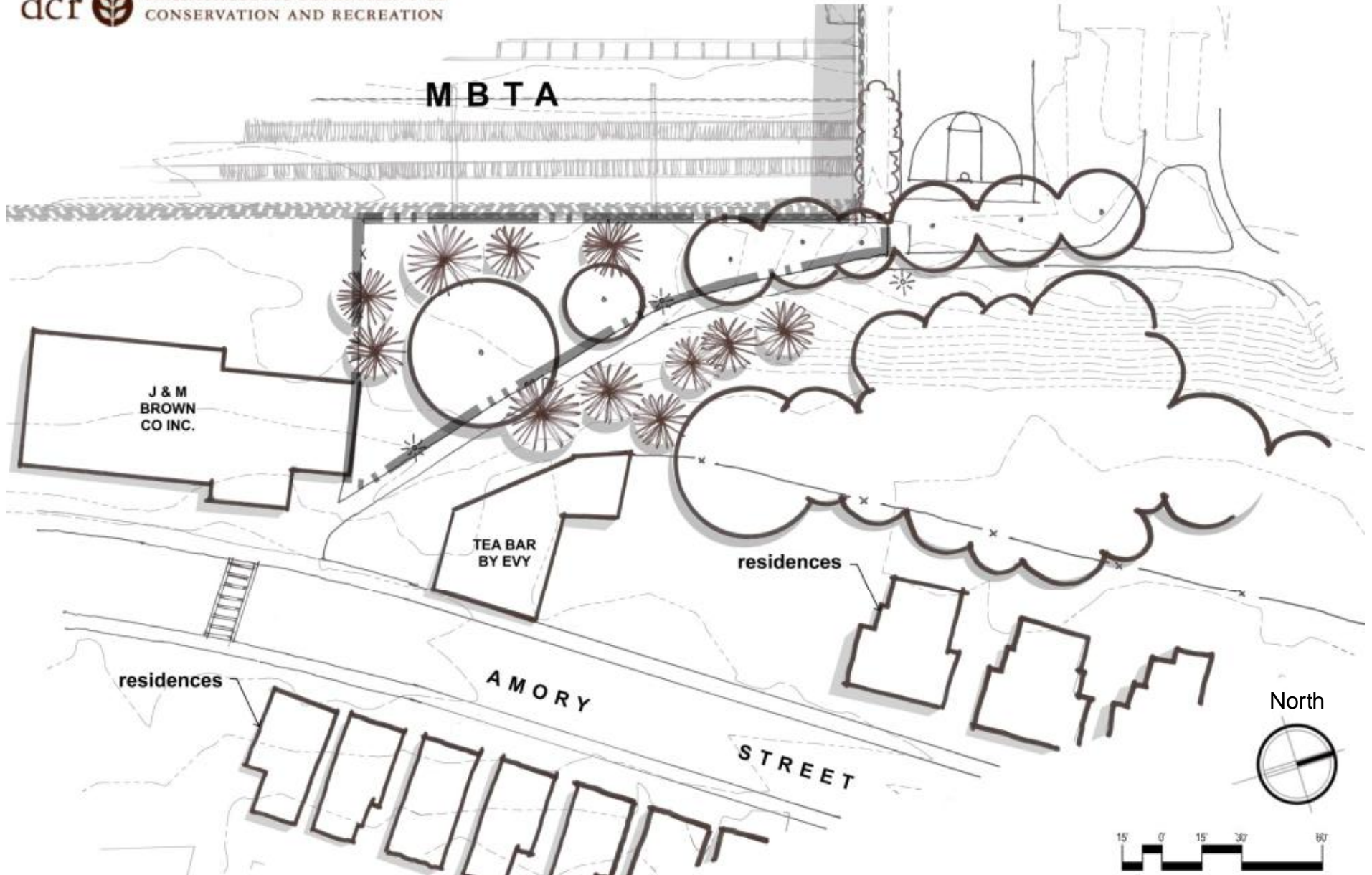
Location A

Location B

253 Amory Street
9,000 SF +/-



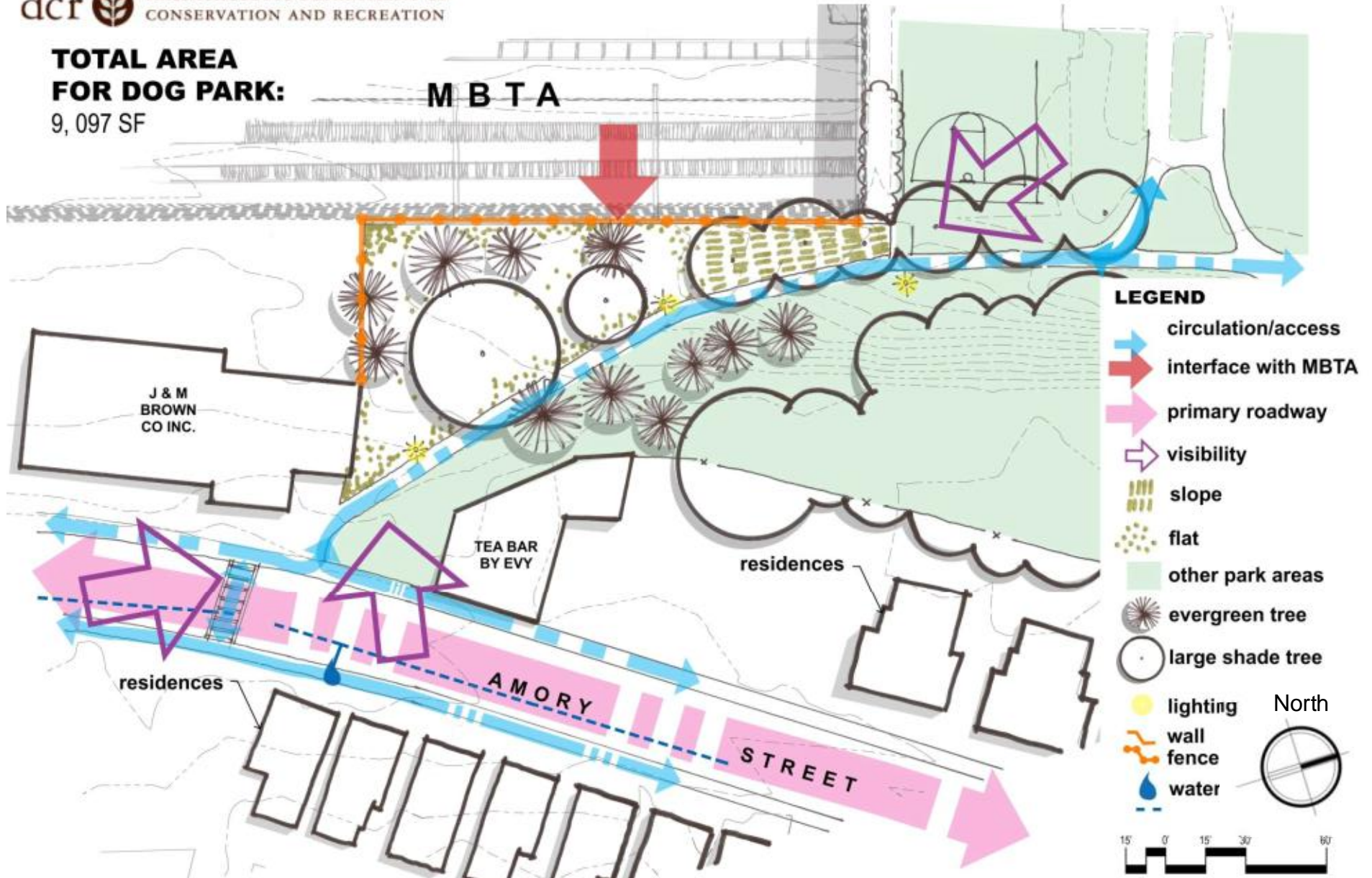




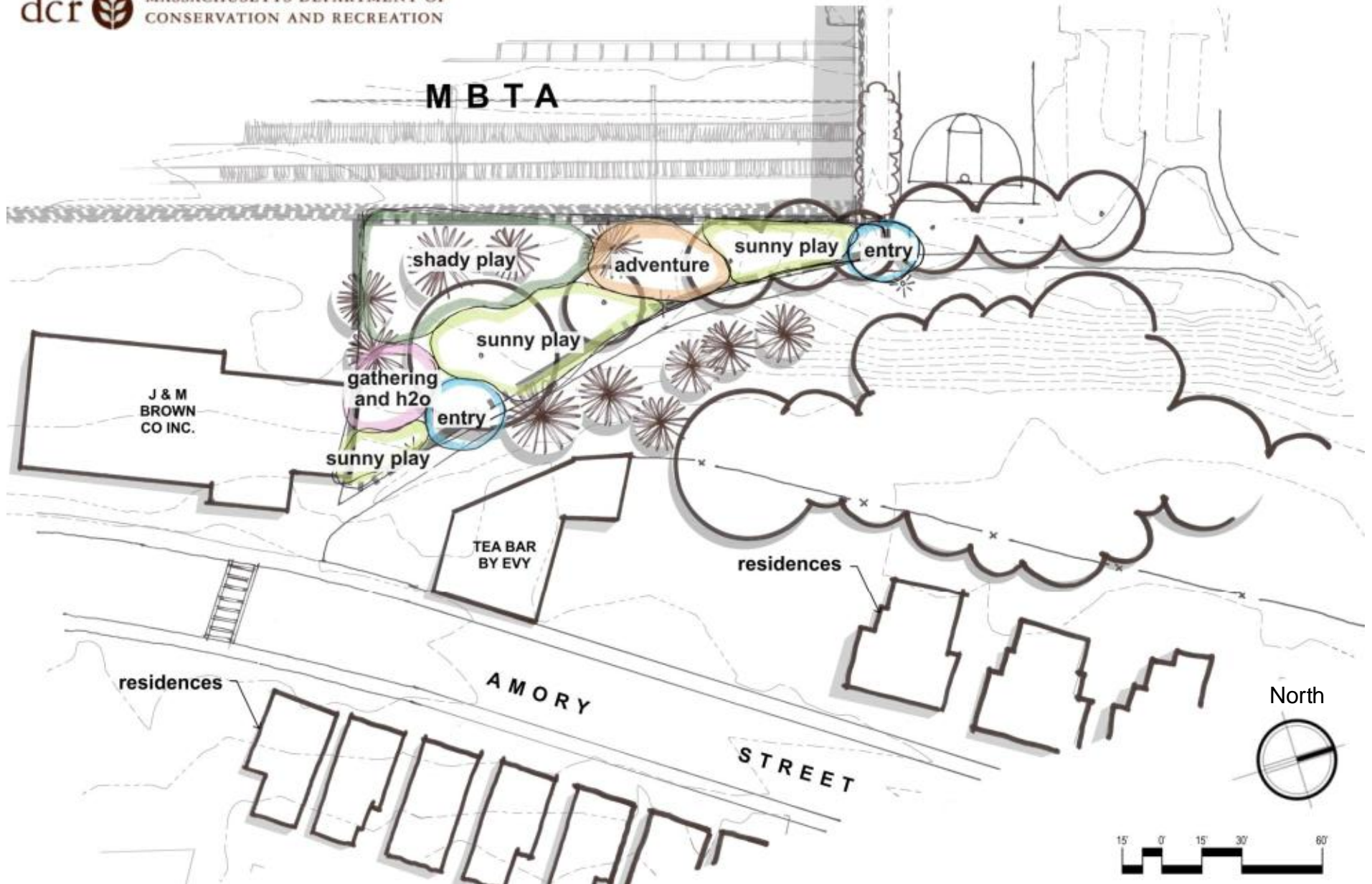
Site Inventory & Analysis: Existing Conditions

Location B

TOTAL AREA FOR DOG PARK:
9,097 SF



Site Inventory & Analysis: Evaluation
Location B



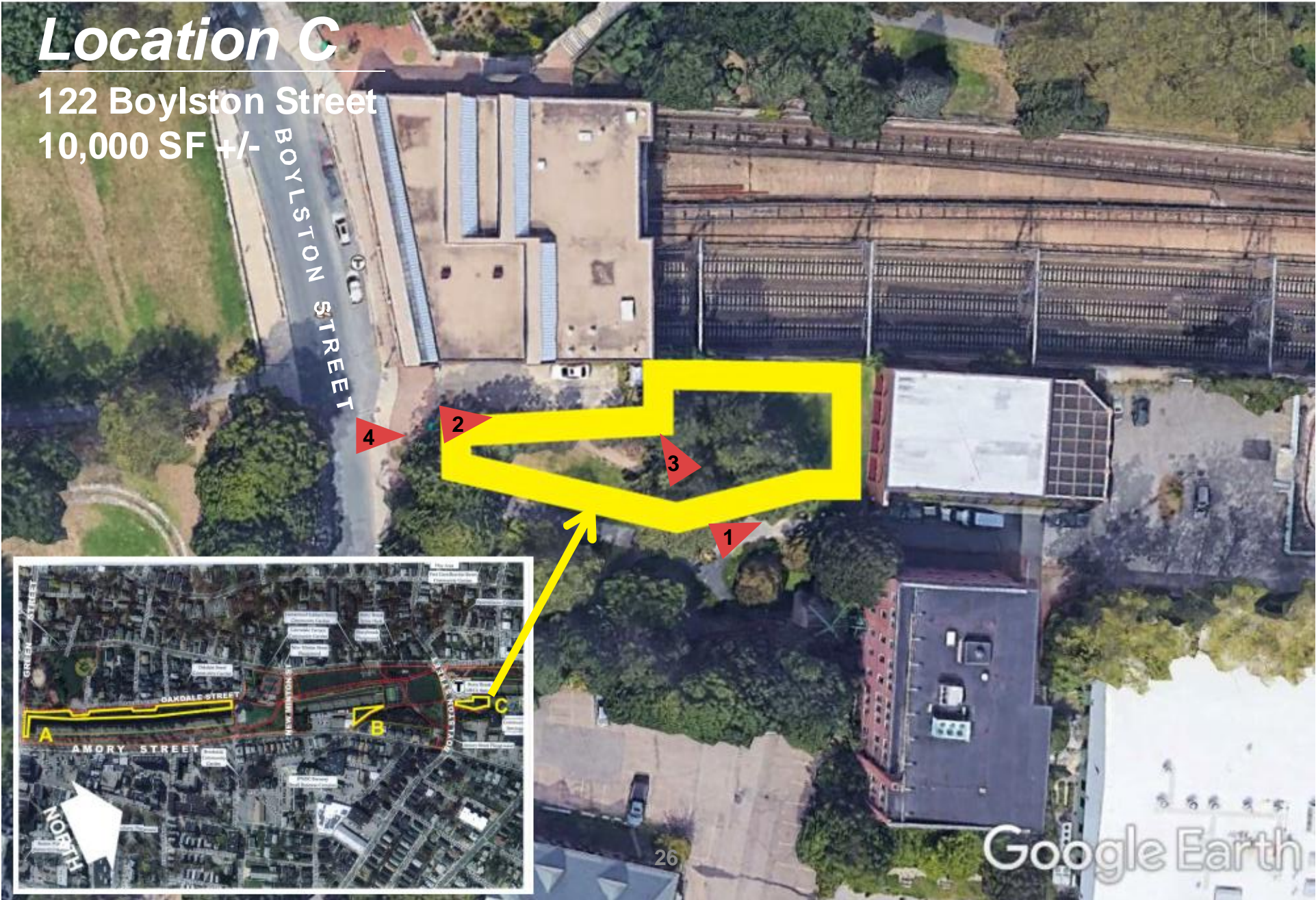
Site Inventory & Analysis: Use Areas

Location B

Location C

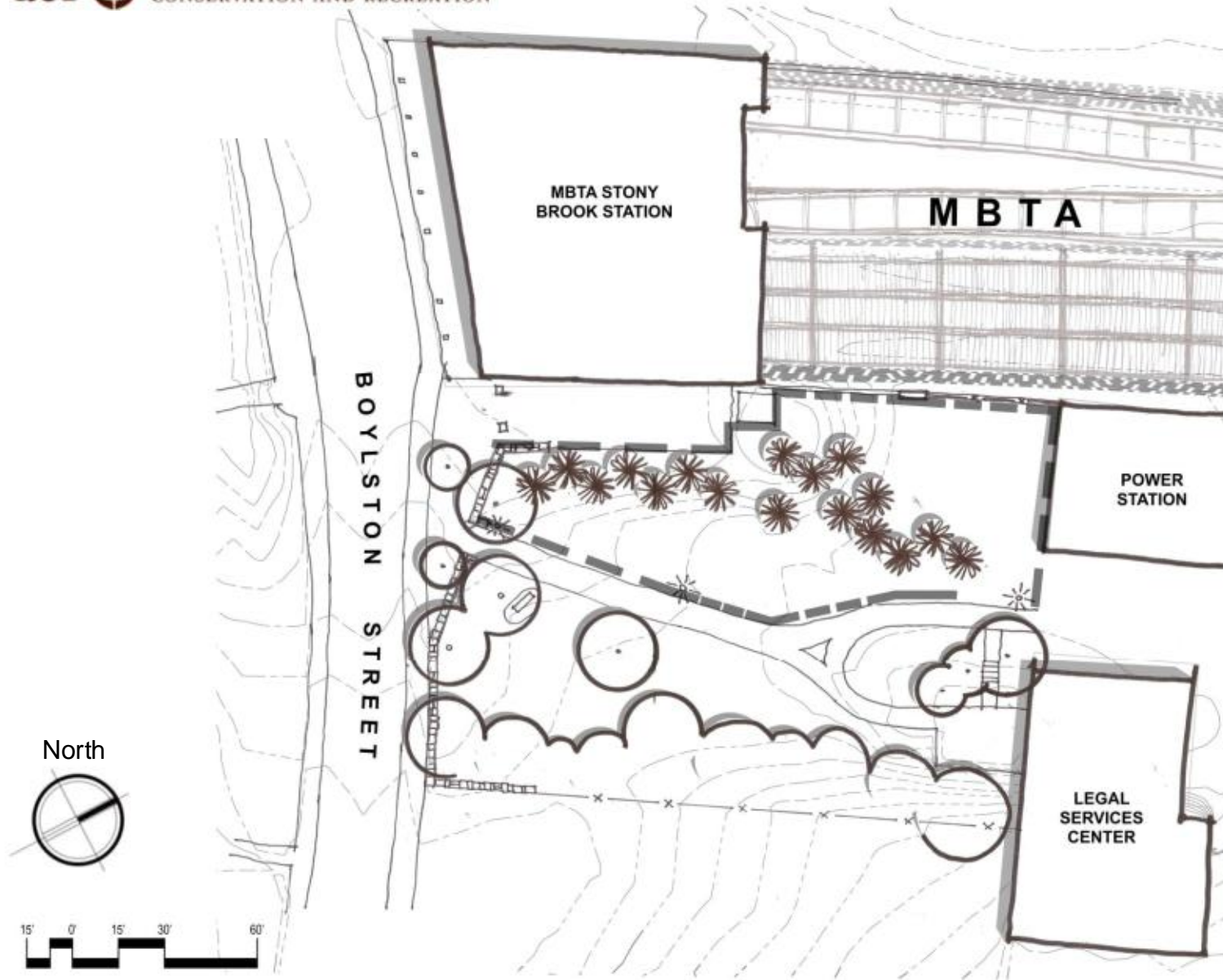
122 Boylston Street
10,000 SF +/-

BOYLSTON STREET



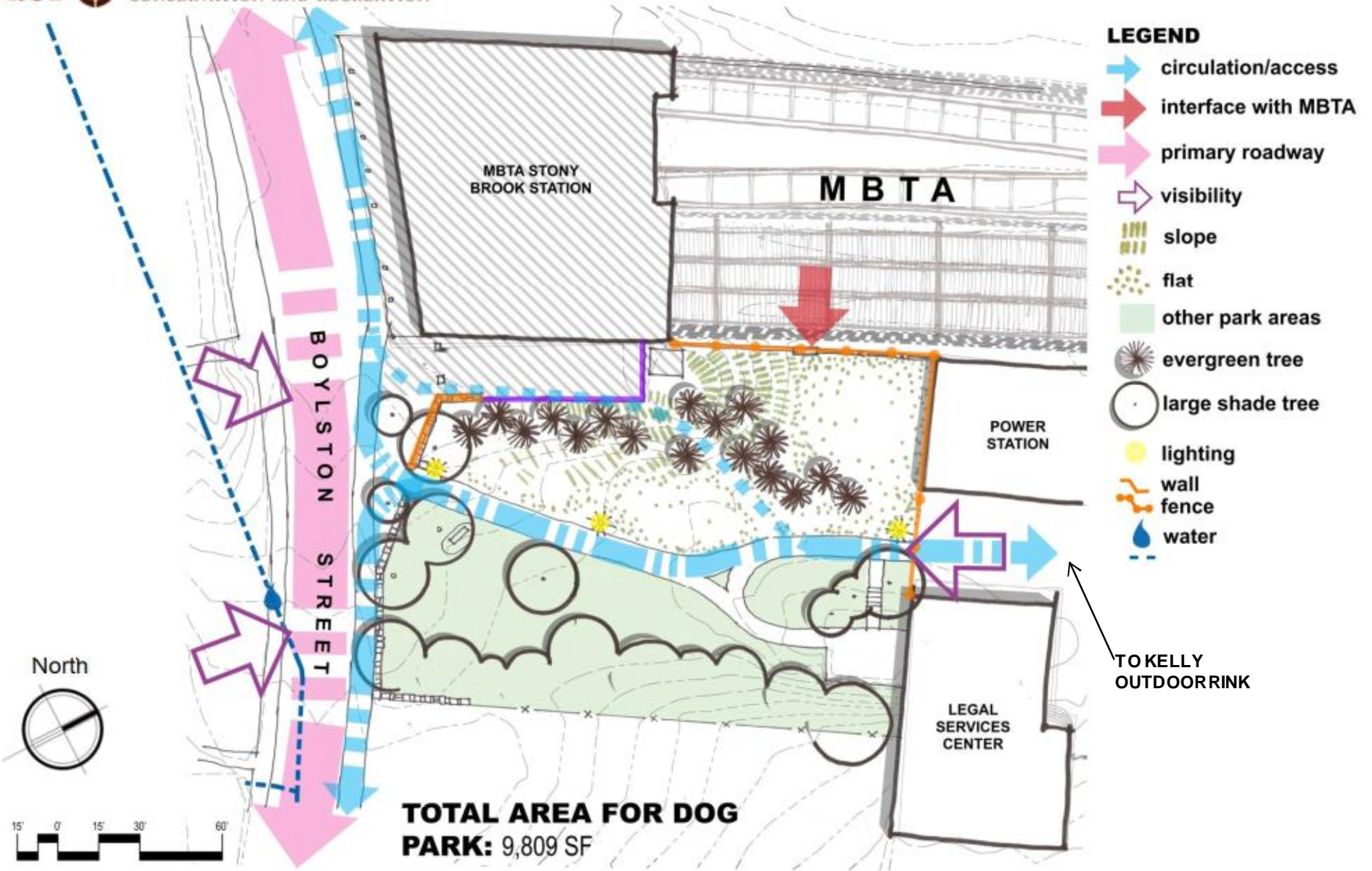
Location C Views





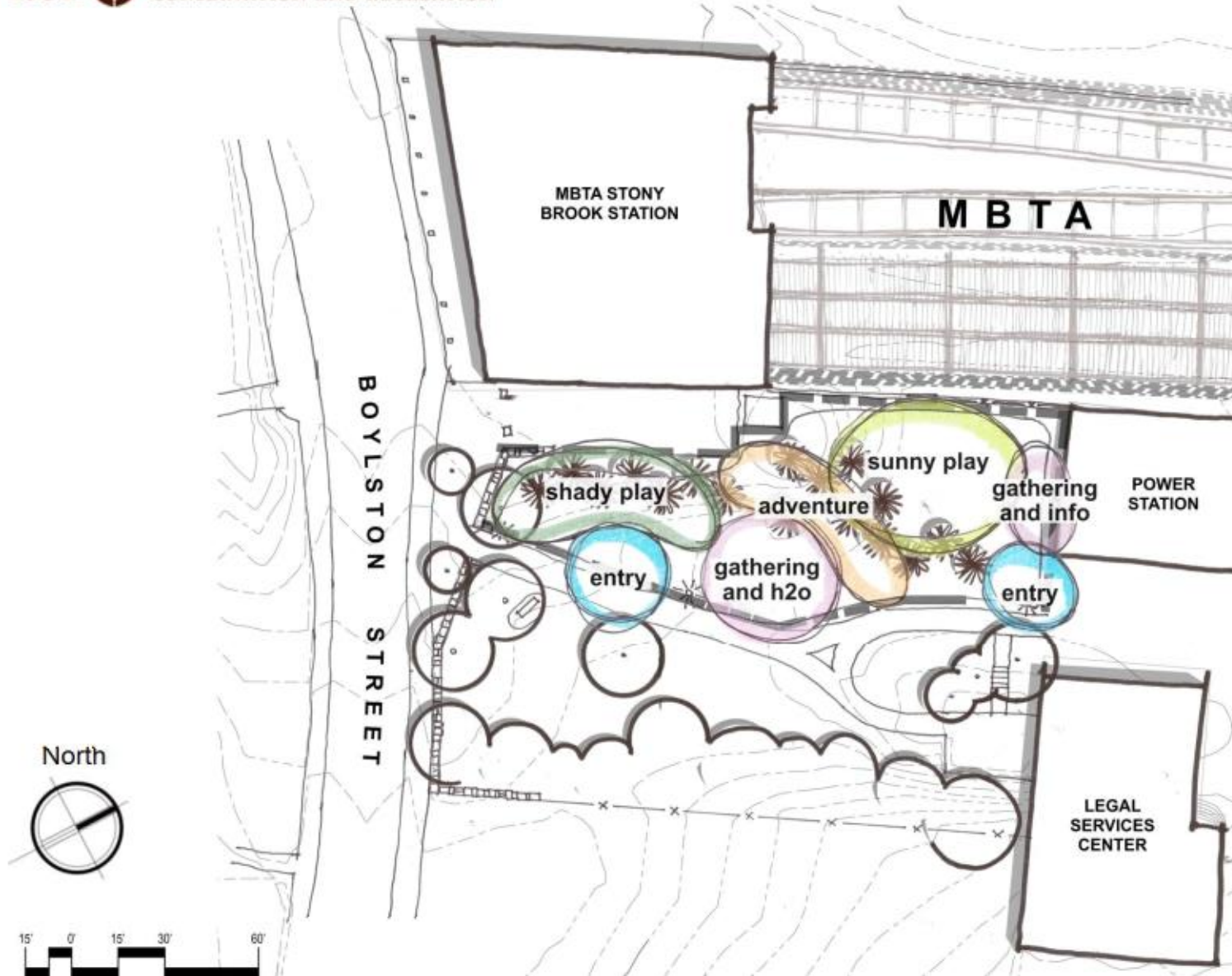
Site Inventory & Analysis: Existing Conditions

Location C



Site Inventory & Analysis: Use Areas

Location C



Site Inventory & Analysis: Use Areas

Location C

Urban Dog Park Elements

- Enclosure and Entry
- Surfacing
- Signage
- Dog Amenities
- People Amenities
- Types of Uses

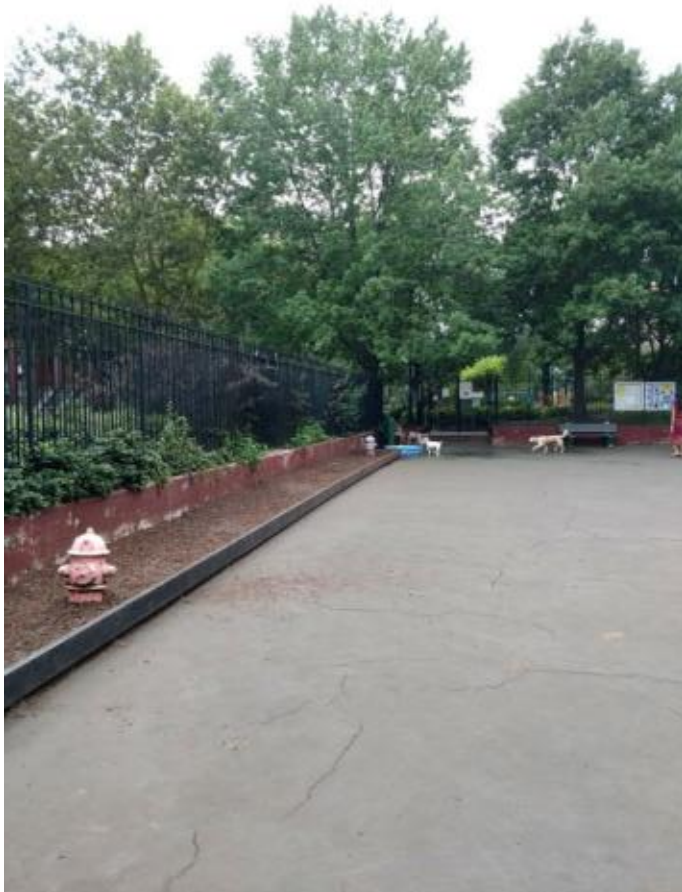
Images for an Urban Dog Park: Enclosure and Entry



Images for an Urban Dog Park: Enclosure and Entry



Images for an Urban Dog Park: Surfacing



Images for an Urban Dog Park: Surfacing



Images for an Urban Dog Park: Wayfinding and Signage



Images for an Urban Dog Park: Posting of Rules



Images for an Urban Dog Park: Dog Amenities



BALANCE BEAM LOG



Images for an Urban Dog Park: People Amenities



Images for an Urban Dog Park: Uses



Images for an Urban Dog Park: Uses



Implementation Considerations

Regulatory and Operations

Current regulations link to CMR ([302 CMR 12.13 and 302 CMR 12.17\(5\)](#))

- Enforcement (DCR Rangers, State police, local animal control officers)
- Commercial dog walker permit

Commercial Dog Walker Permits

- DCR has a Commercial Dog Walkers Permit
- \$100 annual fee for up to four dogs
- \$200 annual fee for up to eight dogs
- No more than eight dogs allowed per permit/walker
- One time application fee of \$35.00

How Friends Groups can support Dog Parks:

- Educate – Off-Leash Training Sessions
- Perform Community Outreach – “Meet and Greet” events
- Carry out Volunteer Activities – Support for upkeep and maintenance
- Fund-raise
- Support DCR in seeking Sponsorships

- Contact Jenny Norwood, Director of External Affairs and Partnerships 617-626-1164

Next Steps/Timetable

- Public comment period (August 2 to August 23, 2018)
- Review of public comments
- Assess community support for this site

Q&A/Discussion

Additional Information

For more information:

<http://www.mass.gov/dcr/past-public-meetings>.

If you have comments or suggestions on this project:

Submit online:

<http://www.mass.gov/eea/agencies/dcr/public-outreach/submit-public-comments/>

Write: Department of Conservation and Recreation
Office of Public Outreach
251 Causeway Street, Suite 600
Boston, MA 02114

Deadline: Thursday, August 23, 2018

Note: Public comments submitted to DCR may be posted on the DCR website in their entirety.

If you wish to subscribe to a DCR general information or project-related listserv: contact DCR's Office of Community Relations at 617-626-4973 or Mass.Parks@state.ma.us.